



Science
 Review Worksheet
 Grade 5

Question 1

A- **Complete** the chart below by identifying the state of matter described by each set of properties.

Properties	State of matter
Definite shape Definite volume	-----
No definite shape No definite volume	-----
No definite shape Definite volume	-----

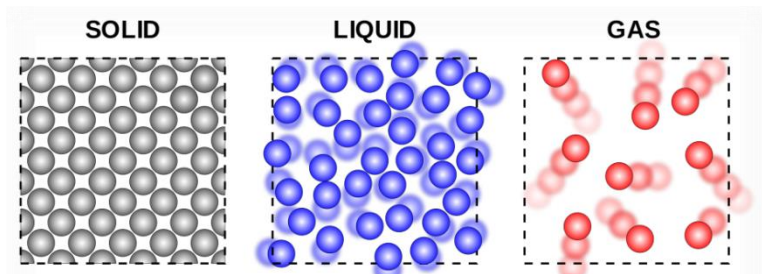
B- **Define** the following:

1- Matter: -----

2- Mass: -----

3- Volume: -----

C- Look at the molecules below for Solid, Liquid and Gas. **Write** an example of each phase of matter.



D- Draw lines to **match** the tools in the right-hand column with the things they measure and with write unit.

Thermometer
Gradated
Cylinder
Ruler
Balance

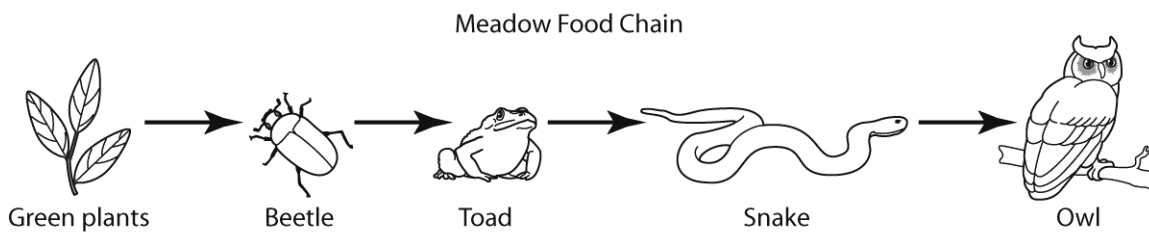
Volume
Mass
Length
Temperature

(°C) or (°F).
cm
ml
g

Question 2

Circle the best answer

1- The figure below shows a food chain that might exist in a field or meadow.



Which organism is the primary consumer in this food chain?

- A- Owl B- Toad C- Beetle D- Plant leaf

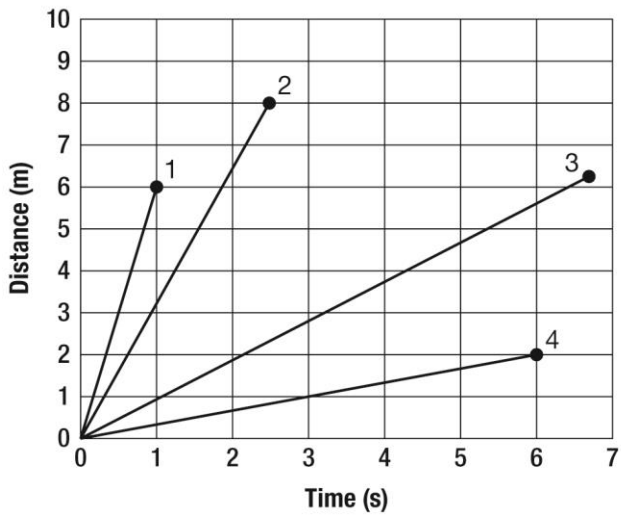
2- Which unit is used to measure distance?

- A- Grams B- Seconds C- Milliliters D- Centimeters

3- Which state of matter has NO definite volume and NO definite shape?

- A- Gas B- Liquid C- Solid

4- This distance-time graph shows the speeds of four toy cars.



Which car is the fastest?

- A- Car 1 B- Car 3 C- Car 2 D- Car 4

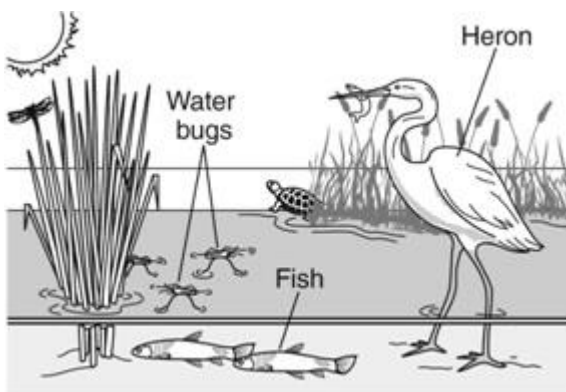
5- One example of matter is:

- A- Sound B- Light C- Water

6- What is the main source of energy for living things?

- A- Air B- Plants C- Soil D- Sunlight

7- The picture below shows organisms that live in a marsh. How does energy move through this food web?

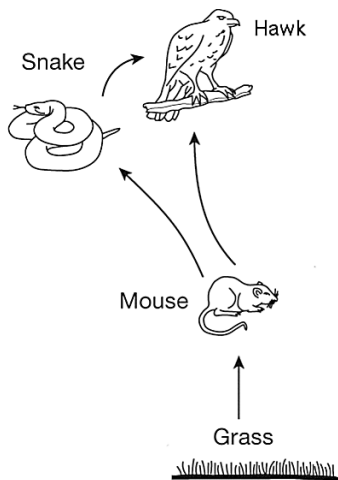


- A- Heron, fish, sun, grass, water bugs
B- Fish, water bugs, grass, heron
C- Sun, grass, water bugs, fish, heron

8- Food chains have three types of consumers. **Which statement describes an herbivore?**

- A- Animals that Eat only plants
- B- Animals that Eat only animals
- C- Animals that Eat plants and animals

9- **Which type of consumer is the hawk?**



- A- A producer
- B- A herbivore
- C- A carnivore

Which of these shows the flow of energy in a food chain?

- A- Decomposers → consumers → plants → producers
- B- Sun → consumers → producers → decomposers
- C- Producers → predators → decomposers → consumers
- D- Sun → producers → consumers → decomposers

10 - **Which of the following does a plant use in the process of photosynthesis?**

- A- Oxygen, sugar, and water
- B- Sunlight, oxygen, and sugar
- C- Water, carbon dioxide, and sunlight
- D- Carbon dioxide, sugar, and sunlight

11- People are part of food chains. **What is the role of people in a food chain?**

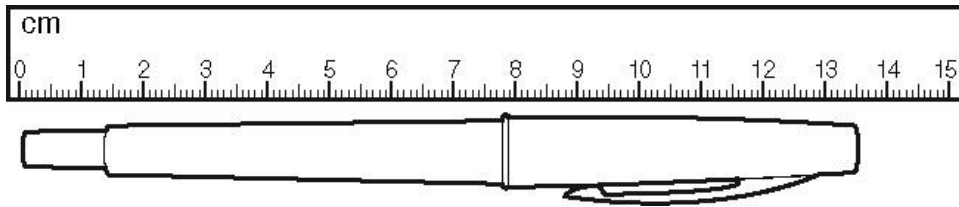
- A- Carnivore
- B- Consumer
- C- Decomposer
- D- Producer

12- Some organisms break down dead things for food. **Which word describes these organisms?**

- A- Consumers
- B- Decomposers
- C- Herbivores
- D- Producers

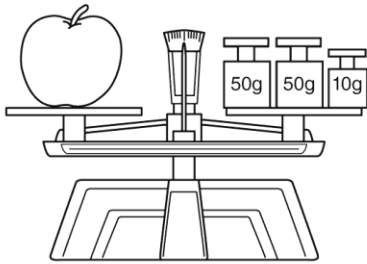
Question 3

A- Length is a physical property that can be observed. The picture below demonstrates one way to find length.



What is the length of the pen?

B- Ahmad has the pan balance shown below.



What can he measure using this instrument?

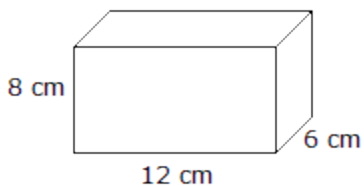
.....

C- What is the **speed** of a dog that runs **21** meters in **7** seconds?

.....

D- How do you calculate the volume of a solid? **What is the volume of this solid object?**

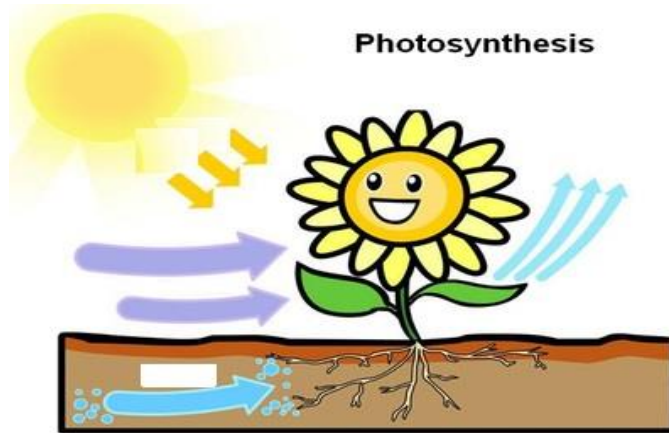
Write the formula.



.....

E- Fill in the blanks to show what happens during photosynthesis.

Some of the words are filled in for you.



Sunlight + _____ + _____ → _____ + Oxygen

Question 4

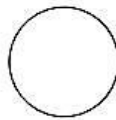
A- The diagrams below are part of a food chain. Place a number from 1 to 4 on the line below each diagram to show the order in which energy flows through this food chain.



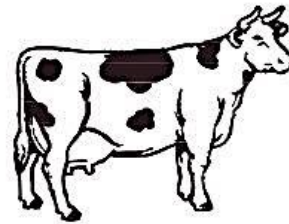
Corn



Student drinking milk

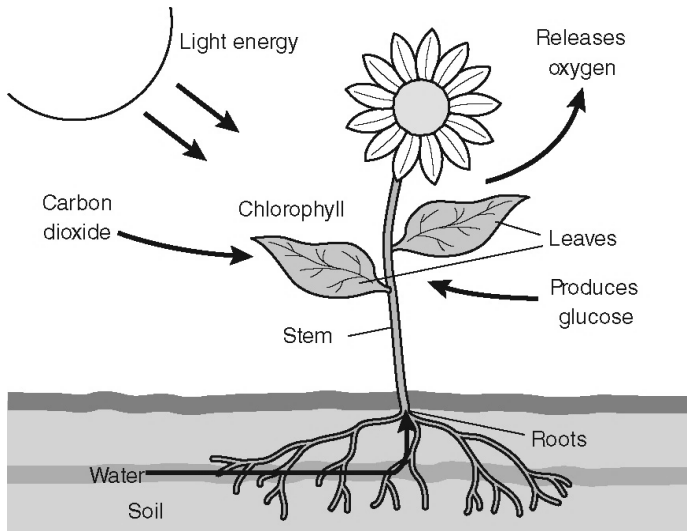


Sun



Cow

B- Study the image, then Choose the correct words from the box to complete the statements.



Stomata	Roots	Light
---------	-------	-------

- 1- absorb water from soil.
- 2- allow the plant to take in carbon dioxide and release oxygen.
- 3- energy from the sun is captured by structures in leaves.

C- List Five science tools:

- 1-
- 2-
- 3-
- 4-
- 5-

D- List two lab safety rules:


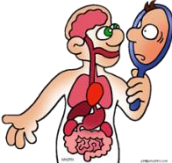



- 1-
- 2-

Question 5

A- Place **True** or **False** next to the following statements.

()	1- Most of the energy in an ecosystem is present in the producers (the base of energy pyramid).
()	2-Trees change their environment by changing the soil as the roots grow.
()	3-Birds make nests in trees, while rabbits and other burrowing organisms make their homes aboveground.
()	4-Organs that work together to do a job for the body make up a system.

B- Draw lines to match the body system in the right-hand column with the organs belongs to that system.

Skeletal Systems	
Digestive Systems	
Respiratory Systems	
Circulatory Systems	
Muscular Systems	

1- Includes esophagus, stomach, liver, pancreas and intestines.
2- Includes all the muscles throughout your body.
3- Includes heart ,blood and blood vessels.
4- Includes bones and connective tissues.
5- Includes nose, throat lungs and passageways